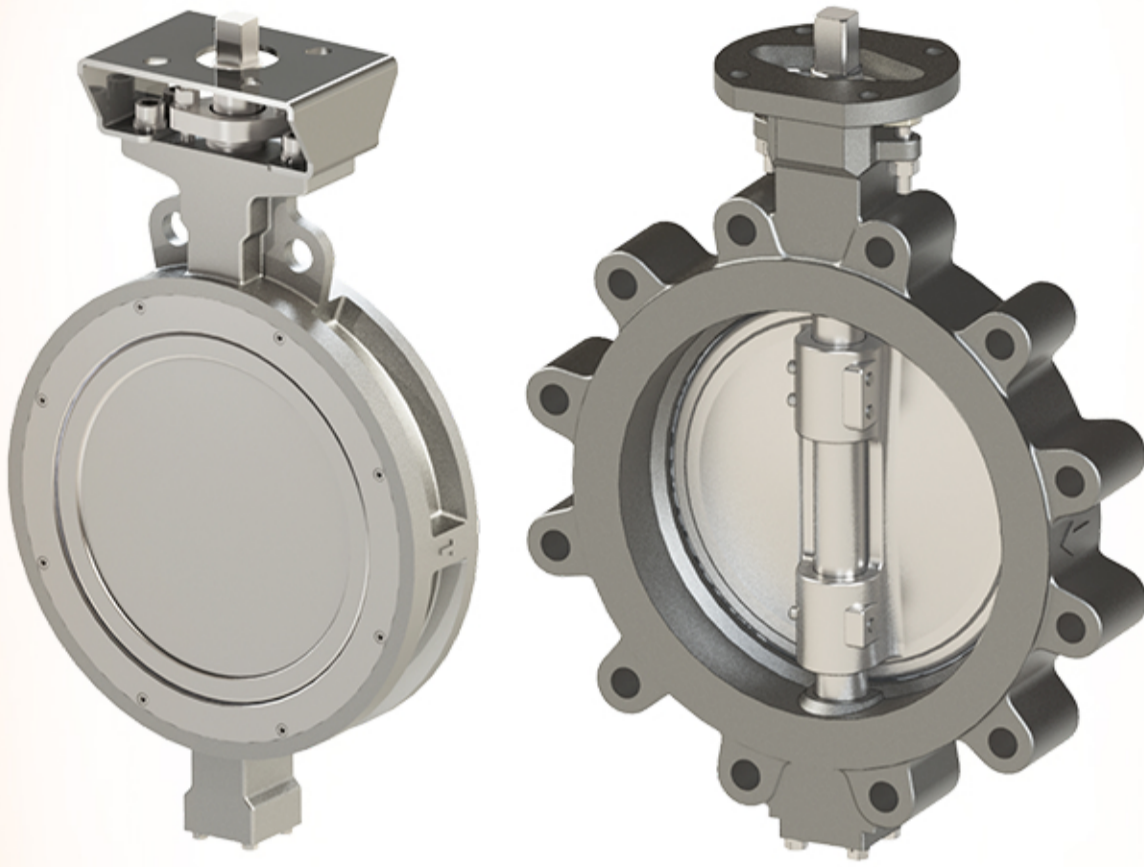




HIGH PERFORMANCE BUTTERFLY VALVE

Butterfly valves suitable for simple as well as highly complex ones. Our Butterfly valves are high performance duty. Butterfly valves are suitable as either open/closed or rare application in regulating valves. They are available in a wide variety of sizes, materials and models. Butterfly valves can be operated with various controls actions like electric / pneumatic actuator options.



SPECIFICATIONS :

BODY	:	WCB / CF8 / CF8M / DUPLEX / ALL BRONZE
DISC	:	WCB / CF8 / CF8M / DUPLEX / ALL BRONZE
SEAT	:	EPDM / VITON / NBR / PFA / PTFE / RPTFE
SHAFT	:	AISI 410 / AISI 304/AISI 316
MFG STD	:	API 609 / ASME B 16.34
INSP & TEST STD	:	API 598
OPERATION	:	MANUAL GEAR OPERATED / PNEUMATIC ACTUATOR / ELECTRIC ACTUATOR
ENDS	:	ANSI B 16.5 #150
HYD TEST PRESSURE	:	BODY : 225 PSIG (16 KG/CM2) SEAT : 165 PSIG (11.5 KG/CM2)
SIZE RANGE	:	50 NB TO 600 NB (2' to 24')

